



HCRMA
HIDALGO COUNTY REGIONAL MOBILITY AUTHORITY

BOARD OF DIRECTORS MEETING FOR SEPTEMBER 2023

HCRMA Board of Directors

S. David Deanda, Jr., Chairman
Ezequiel Reyna, Jr., Secretary/Treasurer
Juan Carlos Del Angel, Director
Gabriel Kamel, Director
Francisco “Frank” Pardo, Director
Sergio Saenz, Director
Michael J. Williamson, Director

HCRMA Administrative Staff

Pilar Rodriguez, PE, Executive Director
Ramon Navarro IV, PE, CFM, Chief Constr. Eng.
Celia Gaona, CIA, Chief Auditor/Compliance Ofcr.
Ascencion Alonzo, Chief Financial Ofcr.

General Engineering Consultant
HDR Engineering INC.



Overview

- ❑ 365 TOLL Project Overview
- ❑ IBTC Project Overview
- ❑ Overweight Permit Summary
- ❑ Construction Economics Update

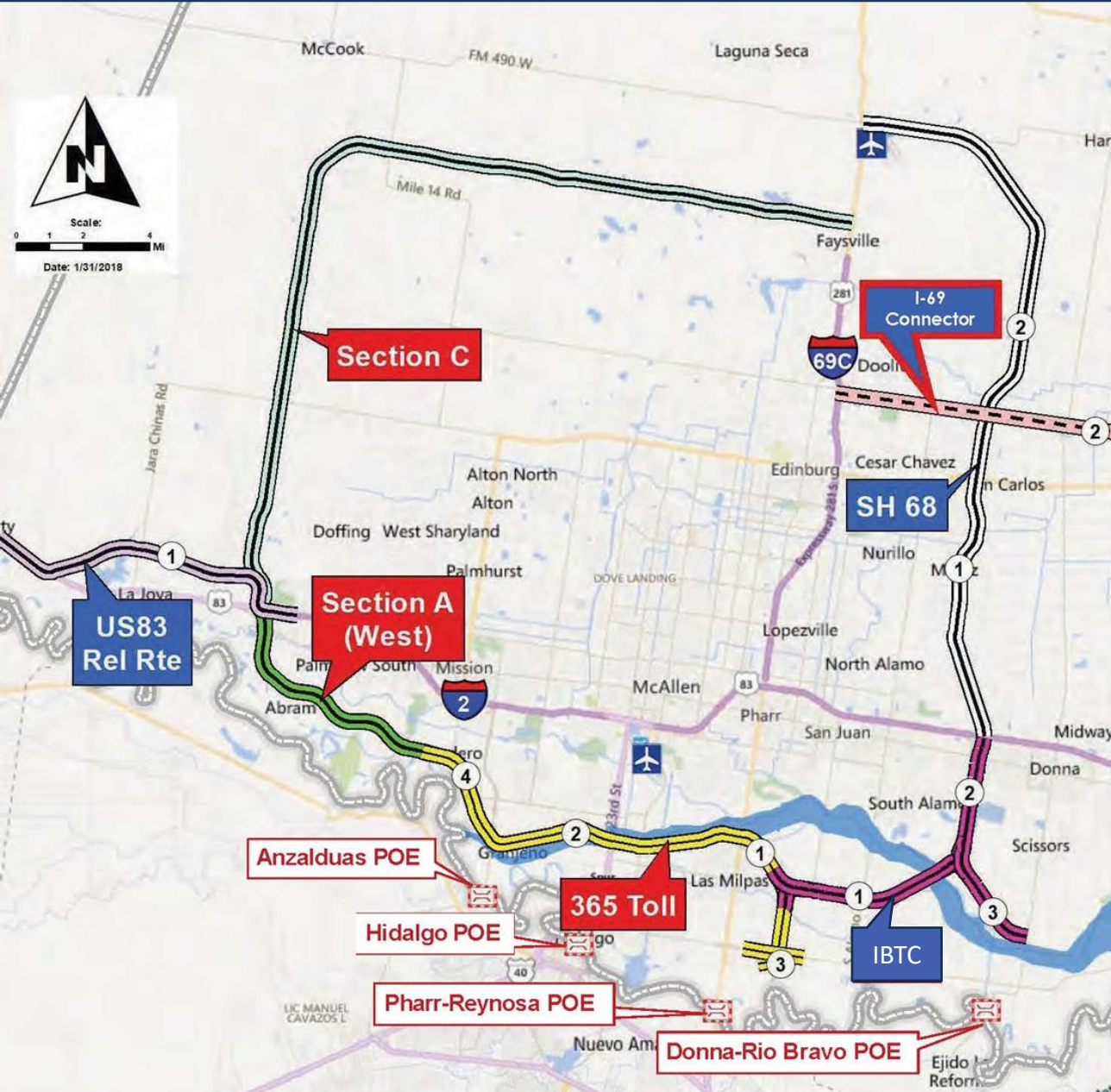
MISSION STATEMENT:

“To provide our customers with a rapid and reliable alternative for the safe and efficient movement of people, goods and services”



HCRMA STRATEGIC PLAN

DEVELOP THE
INFRASTRUCTURE TO
SERVE A POPULATION
OF APPROXIMATELY
800,000 RESIDENTS
AND
5 INTERNATIONAL
PORTS OF ENTRY

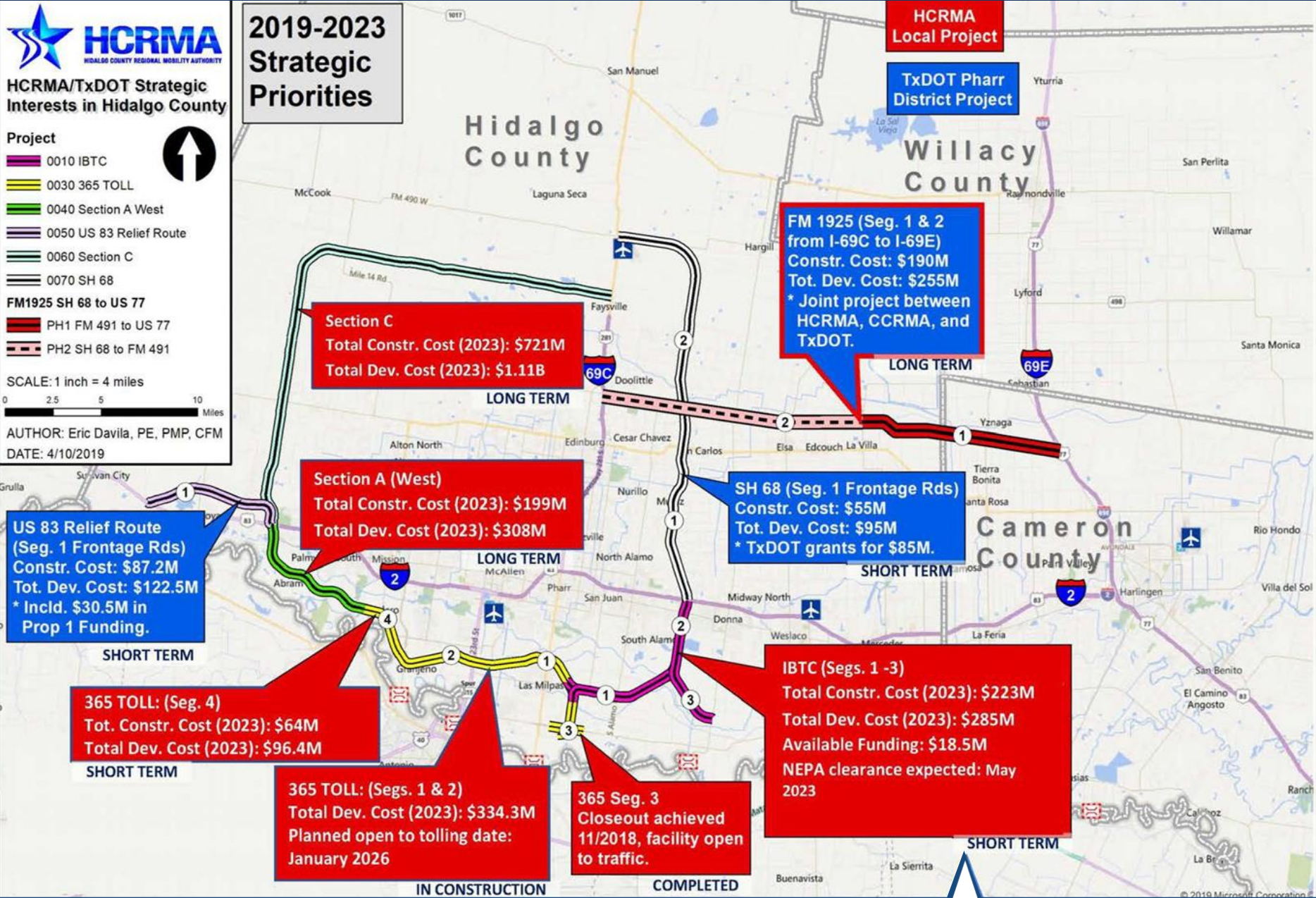


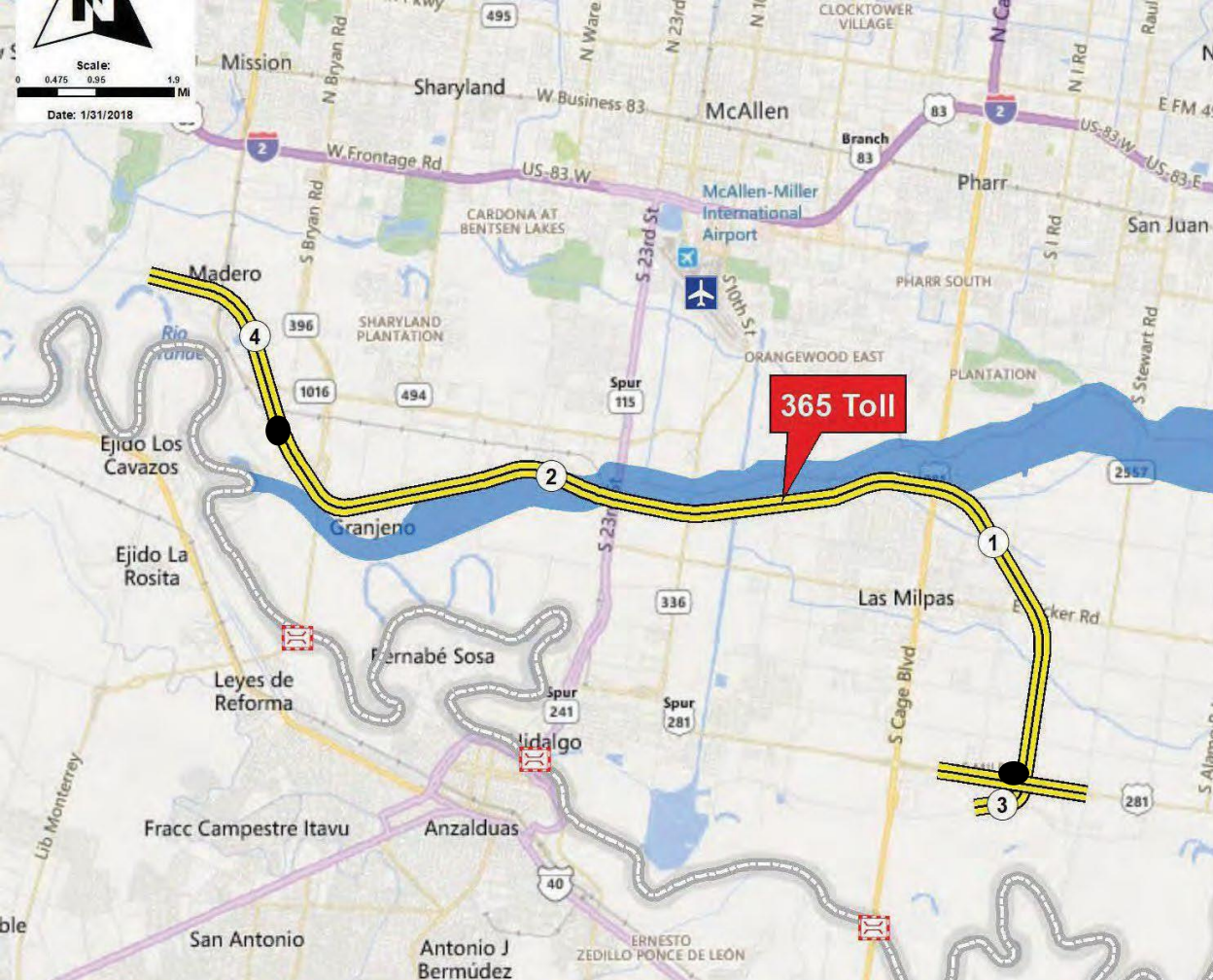
- Project**
-  0010 IBTC
 -  0030 365 TOLL
 -  0040 Section A West
 -  0050 US 83 Relief Route
 -  0060 Section C
 -  0070 SH 68
 - FM1925 SH 68 to US 77**
 -  PH1 FM 491 to US 77
 -  PH2 SH 68 to FM 491

SCALE: 1 inch = 4 miles
0 2.5 5 10 Miles

AUTHOR: Eric Davila, PE, PMP, CFM
DATE: 4/10/2019

2019-2023 Strategic Priorities





MAJOR MILESTONES:

NEPA CLEARANCE
07/03/2015

100% ROW ACQUIRED

PH 1: 365 SEG. 3 –

LET: 08/2015

COMPLETED

PH 2: 365 TOLL

SEGS. 1 & 2 –

OPEN: 01/2026

[SEGS. 1 & 2] LIMITS FROM 0.8 MI. W. FM 396 / ANZ. HWY.
TO US 281 / BSIF CONNECTOR [365 SEG. 3 COMPLETED]
[SEG. 4 FUTURE] LIMITS FROM FM 1016 / CONWAY
TO 0.8 MI. W. FM396 / ANZALDUAS HIGHWAY



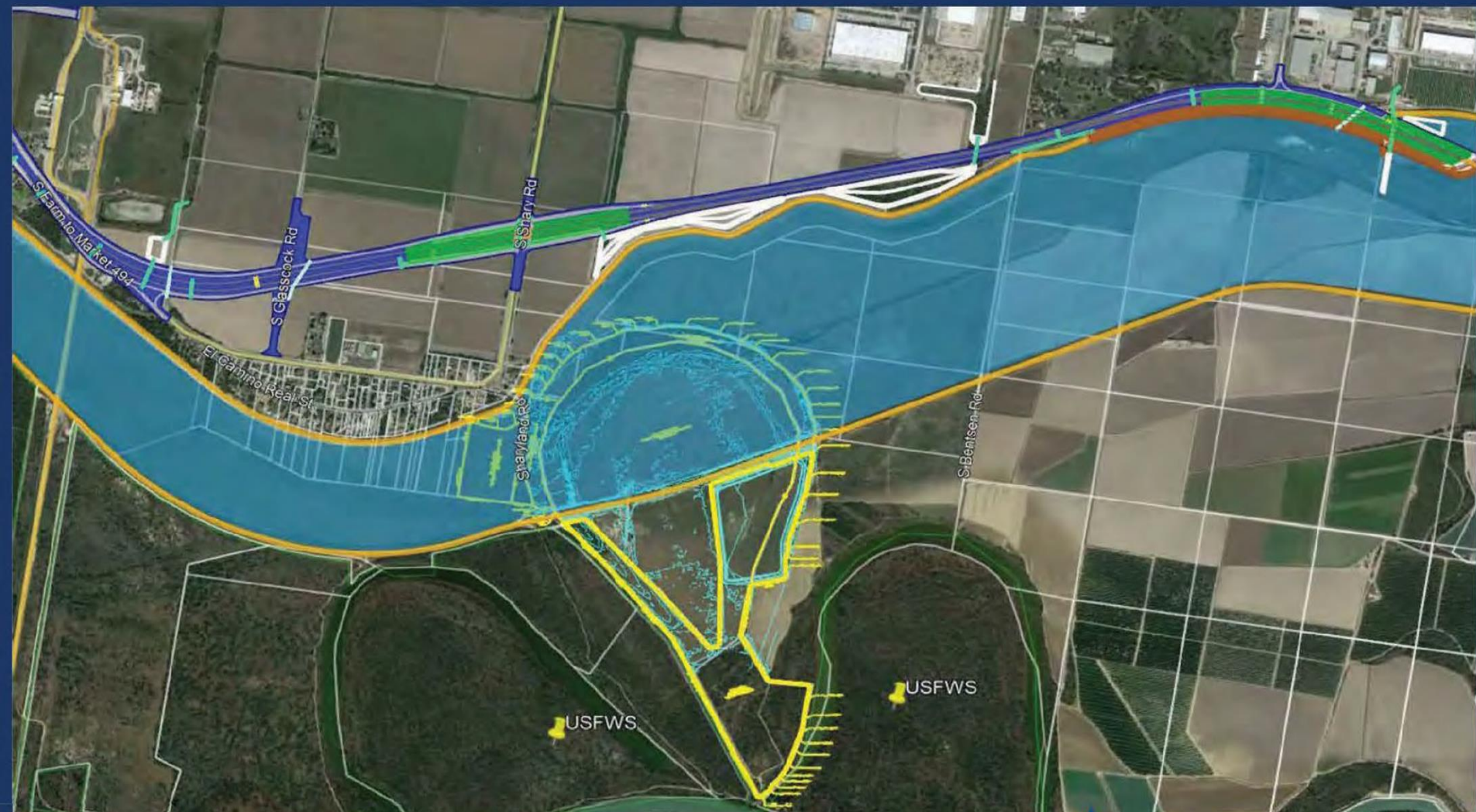


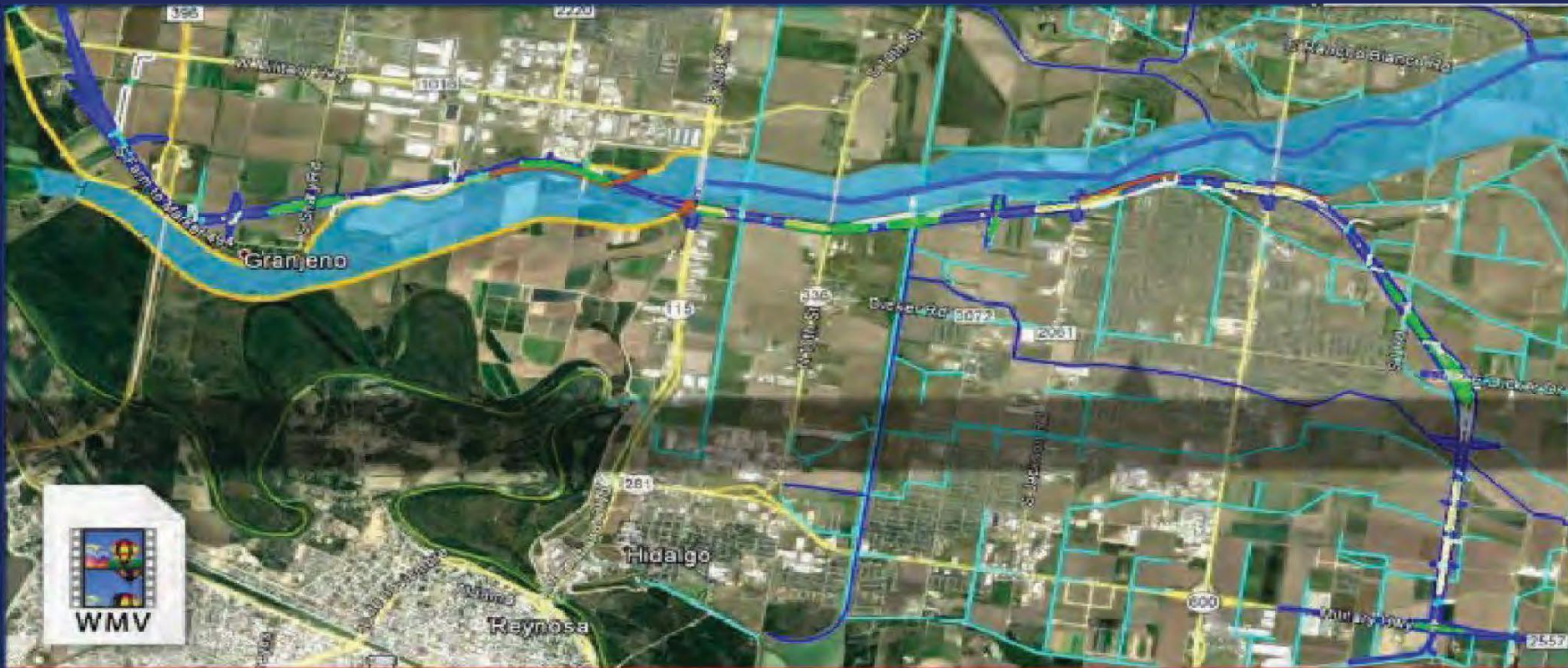
365 TOLLWAY COLLECTION SYSTEM INSTALLATION, INTEGRATION, and MAINTENANCE PROJECT

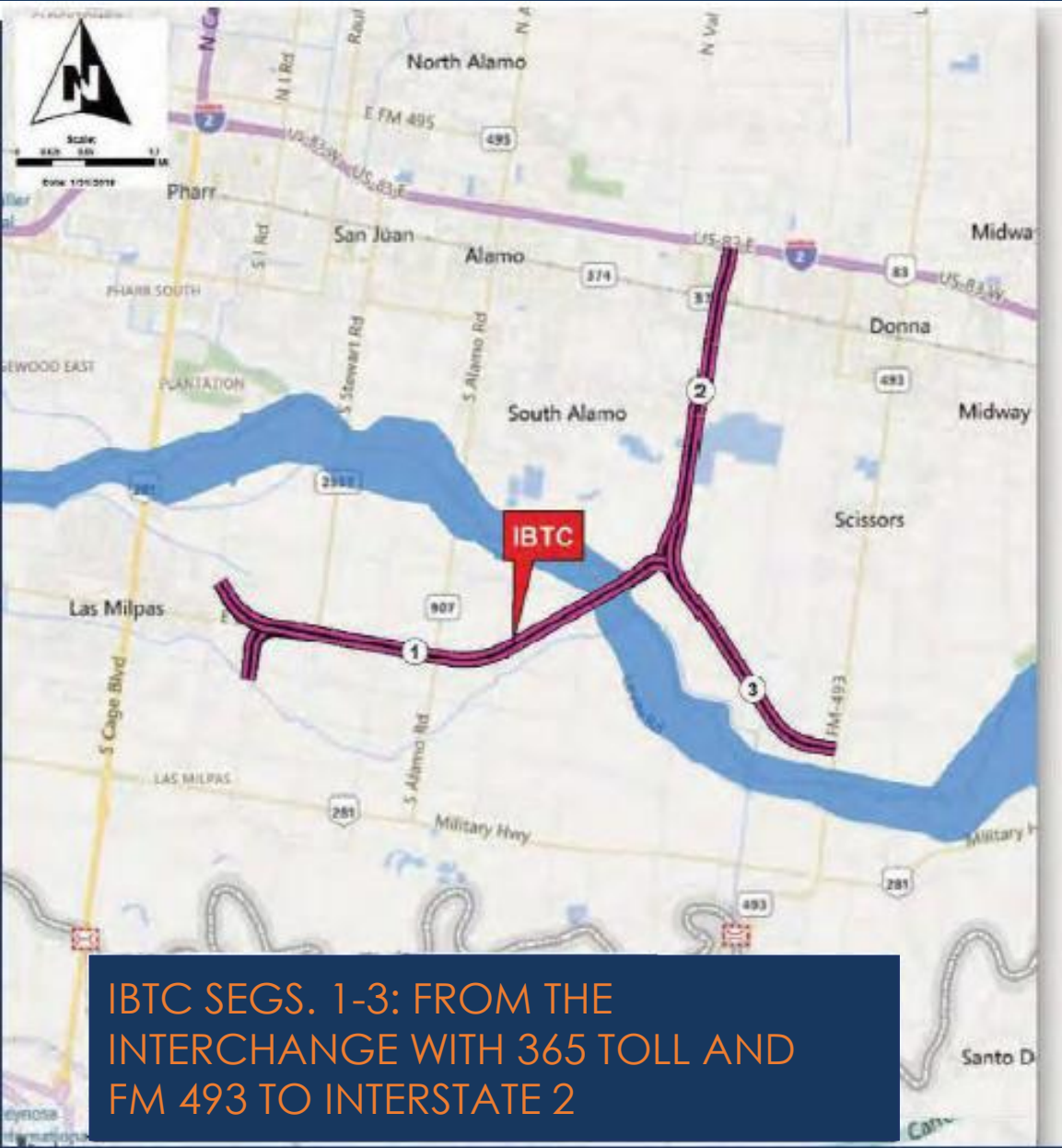
- SEPTEMBER 8, 2022 Request for Proposals was released
- OCTOBER 3, 2022 Mandatory Pre-bid meeting was conducted with In-Person or Virtual Attendance option
- DECEMBER 6, 2022 Five Proposals were received for the 365 Toll Collection System Installation, Integration, and Maintenance Project
- DECEMBER 16, 2022 Compliance reviews were conducted of all electronic bids;
- FEBRUARY 6, 2023 Evaluation committee [HCRMA staff and HDR [GEC]] thoroughly reviewed proposals, conducted oral presentations and in accordance with the RFP's two-step scoring process
- FEBRUARY 14, 2023 Proposal bid prices opened, evaluated, scored by evaluation committee
- FEBRUARY 28, 2023 First executive briefing
- MARCH 13, 2023 Second executive briefing
- MARCH 14, 2023 Negotiation of contract terms, condition, & BAFO
- MARCH 28, 2023 Award of contract to SICE, Inc. for \$13,980,669 with a score of 905



WETLAND MITIGATION SITE







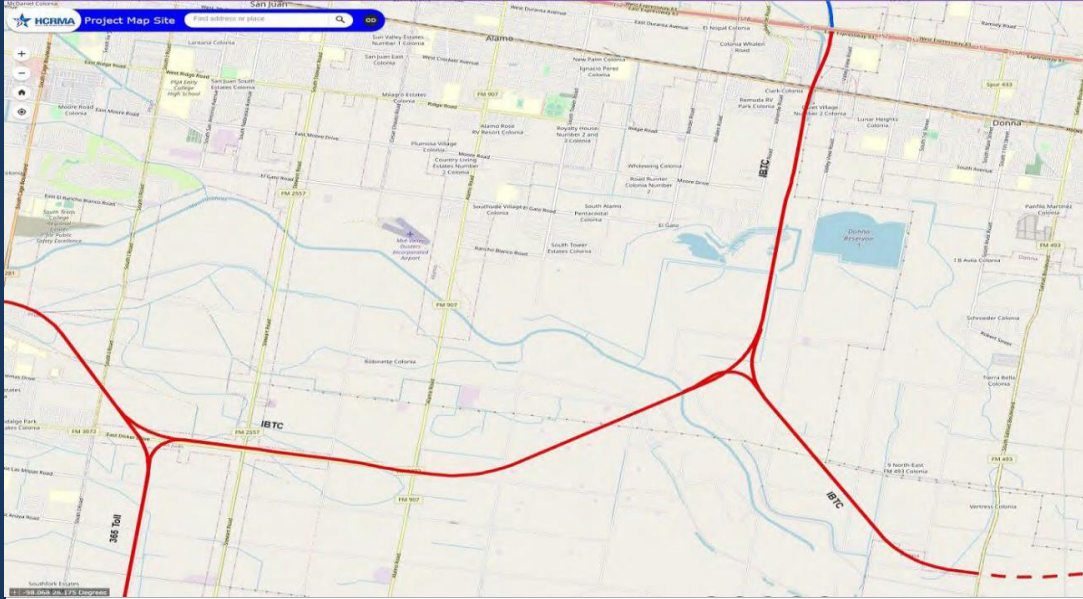
IBTC

13.15-mile-long project. The proposed project would construct a new location non-tolled facility beginning at 1) 365 Tollway (Dicker Road) and extends 5.43 miles in a west direction. The alignment splits just west of FM 1423 (Val Verde Road) and travels north, 2) the northern leg continues 4.21 miles to interstate Highway 2. The east leg 3) travels 3.51 miles east to where it is proposed to connect to FM 493.

IBTC SEGS. 1-3: FROM THE INTERCHANGE WITH 365 TOLL AND FM 493 TO INTERSTATE 2

HCRMA – IBTC Project

CSJ#:0921-02-142



Recent Key Activity:

- Included in Border Master Plan- High Impact Project.
- Received Environmental Classification of Environmental Assessment October 2017.
- Held Public Meeting March 2019.
- TxDOT approved schematic November 2021.
- Public Hearing held March 2022.
- Risk workshop held with TxDOT Portfolio Management Division April 2022.
- Requested Functional Classification: Principal Arterial.
- Estimated NEPA clearance by May 2023.
- Schematic updates UPRR Structure Group for Railroad Bridge over BUS83.
- Working with RGVMPPO/TxDOT to federalize project.
- TxDOT/FHWA to migrate project ON-SYSTEM.
- \$150,000,000 funding allocation recommended to TTC.

1. **Environmental: 100%**
2. **Preliminary Engineering: 65%**
3. **ROW & Utilities: 35%**
63 of 186 parcels acquired
4. **Design: 45%**
5. **Funding: 100% \$211,442,110**

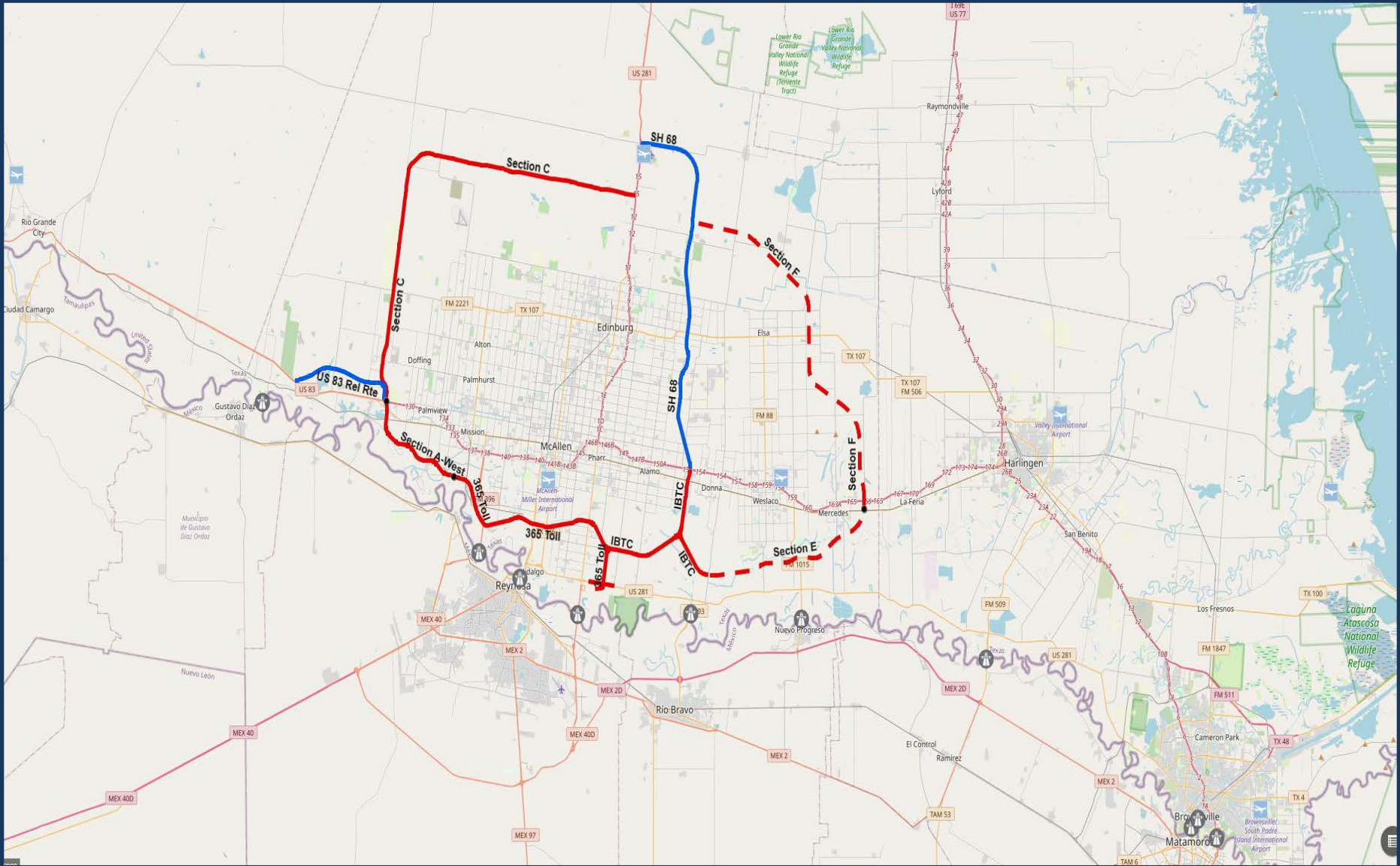
– Pending FC

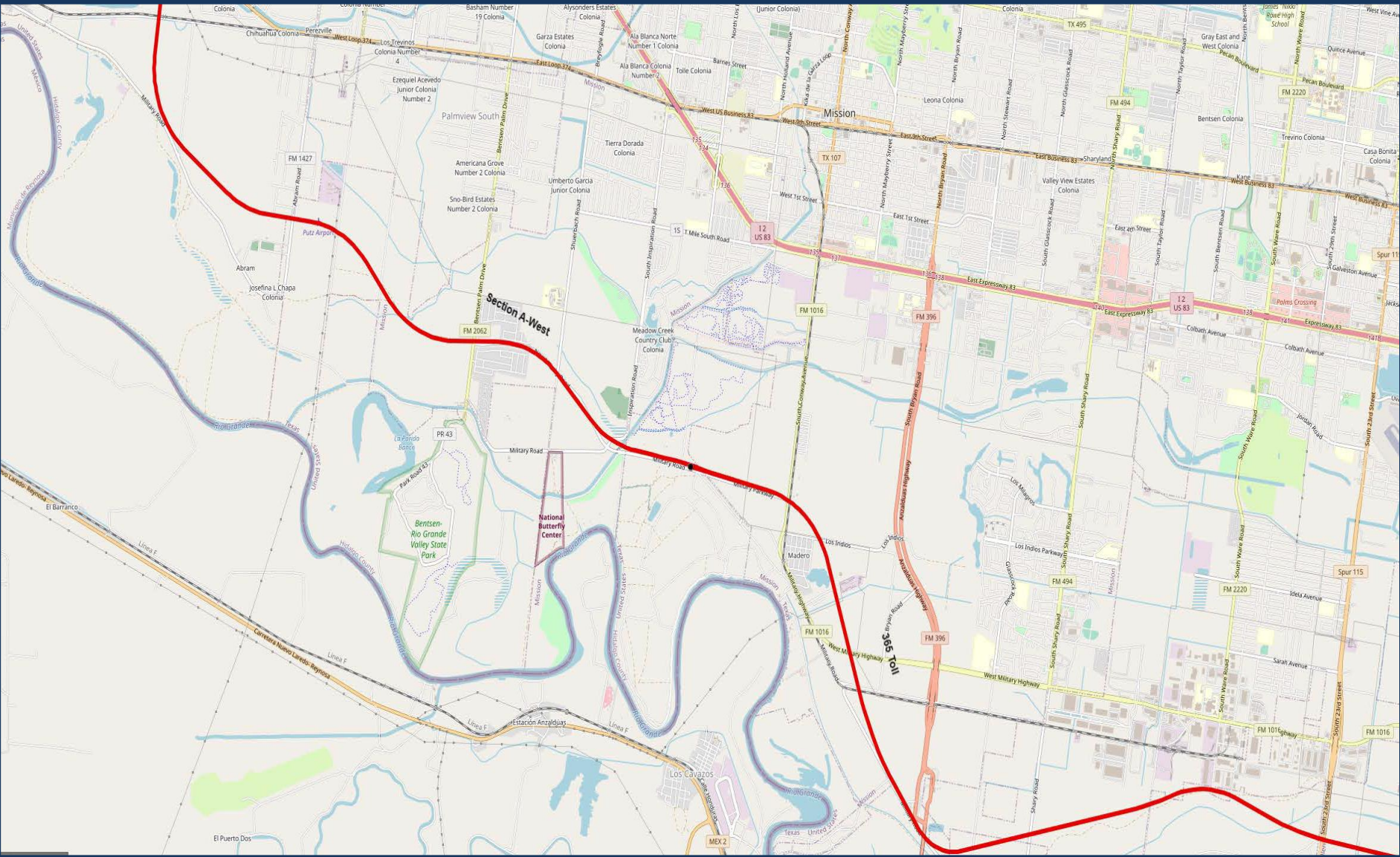
Funding / UTP / TIP Status:

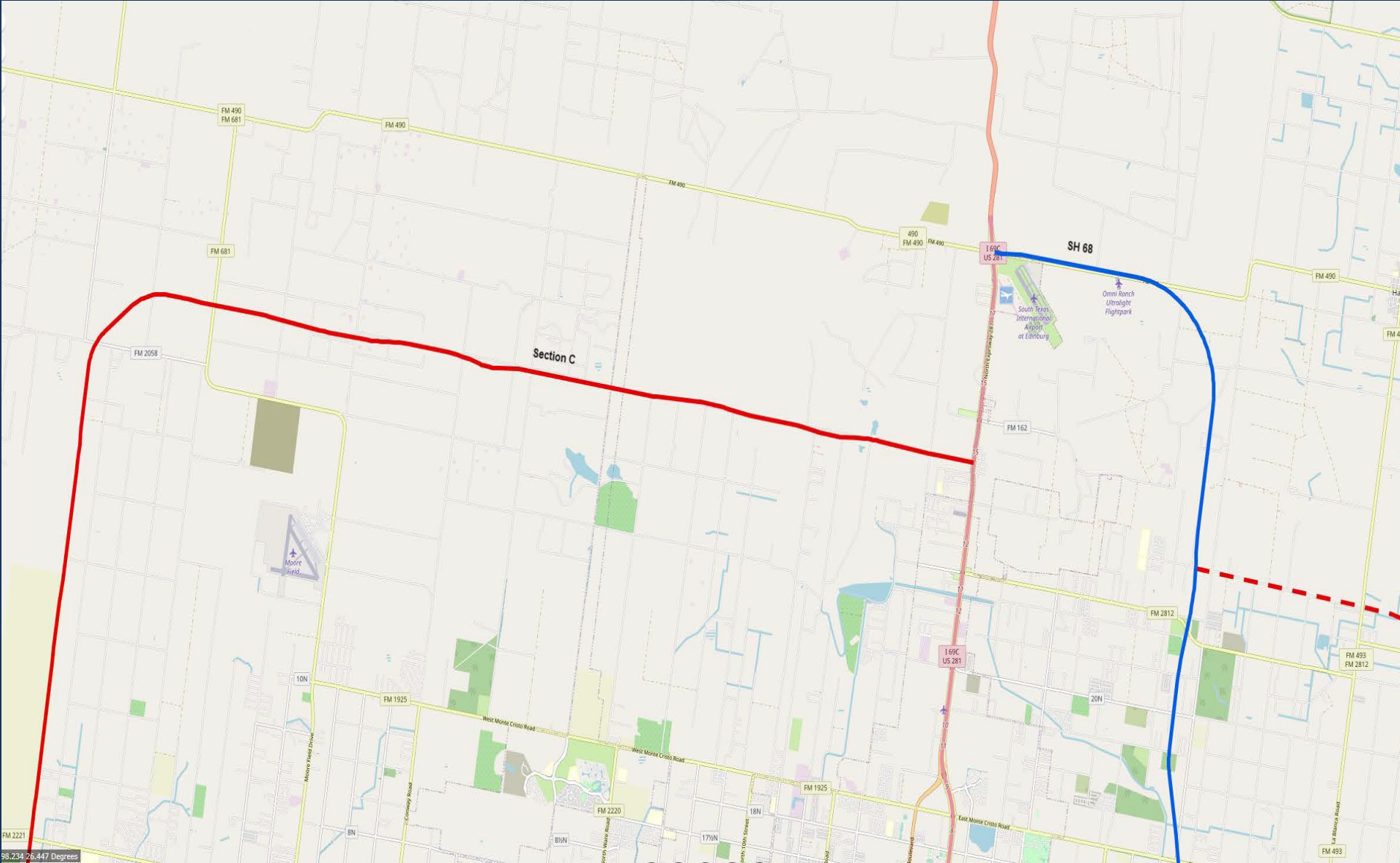
- ❑ Funding is non-toll and incorporates overweight corridor network fees to help finance project.
- ❑ HCRMA requested via letter to TxDOT for On-System classification.
- ❑ The project has been included in federalized amendment to 2023-26 STIP, adding \$20 Million of Category 7 federal funds to the project for construction.
- ❑ On May 1, 2023, Federal Functional Classification [FC] request was submitted to RGVMPO. Preliminary review and TxDOT concurrence for FHWA submittal is anticipated by July 2023.
- ❑ June 2023, \$150,000,000 TxDOT funding was recommended by Texas Governor to TTC.

Environmental:

- ❑ Submitted Final EA revisions 8/8/2022. The Final EA document will need to be updated (Project Consistency Section of the EA) to illustrate the new funding for consistency and anticipate project's final determination by late 2023.
- ❑ Environmental document accepted and NOA [notice of availability] has been posted.







98.23426, 447 Degrees

Thursday, September 14, 2023

Lenguaje

Specialized Overweight Permits

Hidalgo County allows shippers to securely order specialized overweight permits online. The permits cover travel over the Hidalgo County roads listed below for vehicles weighing no more than the Mexican Legal Weight Limit or 125,000 lbs. For a more detailed explanation, see below.

Permit Information

The Hidalgo County Regional Mobility Authority (HCRMA) administers the overweight permit corridor system for the Hidalgo County. Overweight permits issued through the HCRMA are only valid for destinations originating from the following points of entry:

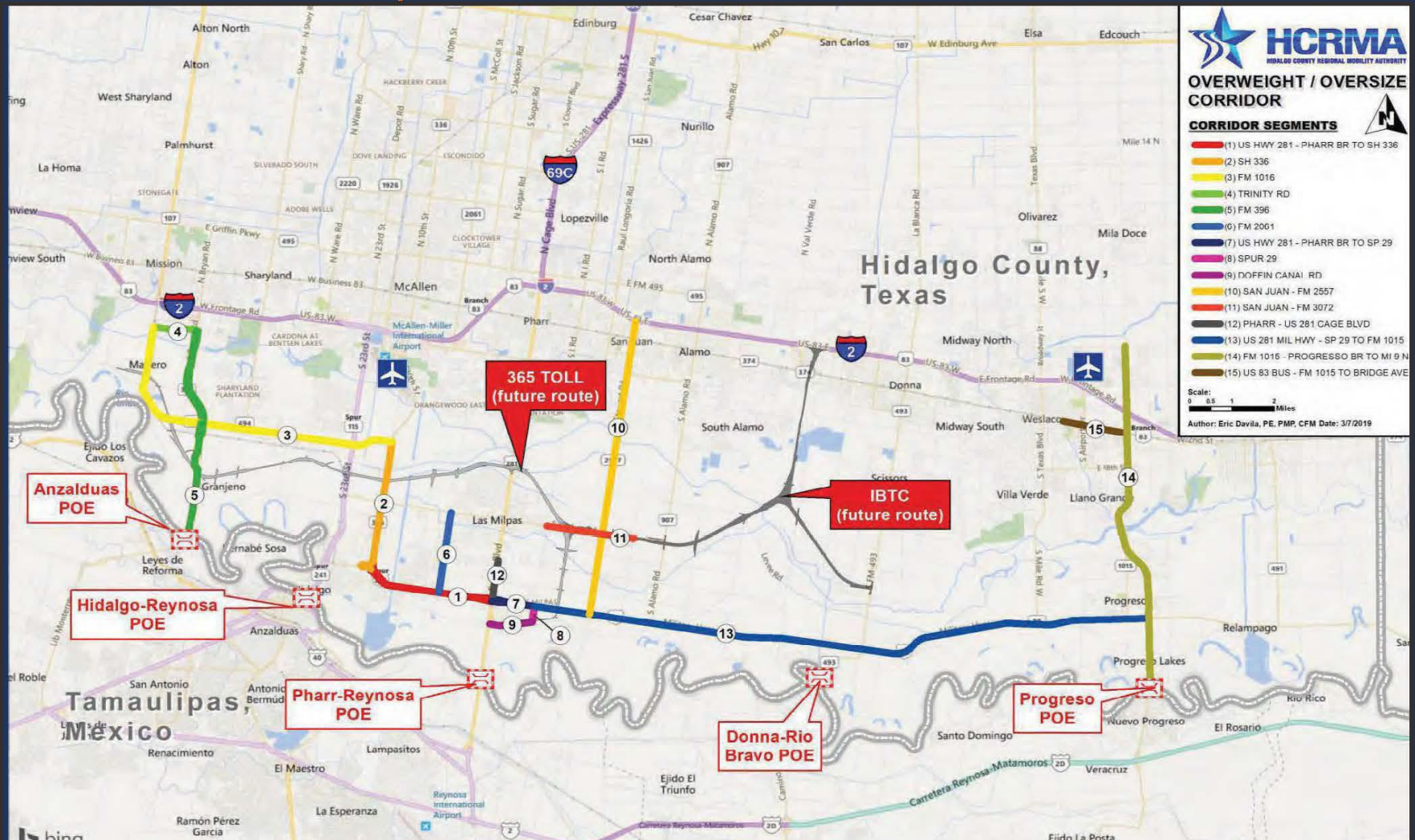
- Anzalduas Bridge
- Pharr-Reynosa Bridge
- Donna-Rio Bravo Bridge
- Progreso Bridge

Or for movement on the following roads:

- (1) U.S. Highway 281 between its intersection with Pharr-Reynosa International Bridge and its intersection with State Highway 336.
- (2) State Highway 336 between its intersection with U.S. Highway 281 and its intersection with Farm-to-Market Road 1016.
- (3) Farm-to-Market Road 1016 between its intersection with State Highway 336 and its intersection with Trinity Road.
- (4) Trinity Road between its intersection with Farm-to-Market Road 1016 and its intersection with Farm-to-Market Road 396.
- (5) Farm-to-Market Road 396 between its intersection with Trinity Road and its intersection with the Anzalduas International Bridge.
- (6) Farm-to-Market Road 2061 between its intersection with Farm-to-Market Road 3072 and its intersection with U.S. Highway 281.
- (7) U.S. Highway 281 between its intersection with the Pharr-Reynosa International Bridge and its intersection with Spur 29.
- (8) Spur 29 between its intersection with U.S. Highway 281 and its intersection with Doffin Canal Road.
- (9) Doffin Canal Road between its intersection with the Pharr-Reynosa International Bridge and its intersection with Spur 29.
- (10) FM 2557 (Stewart Road) from US 281/Military Highway to Interstate 2 (US 83).
- (11) FM 3072 (Dicker Road) from Veterans Boulevard ('I' Road) to Cesar Chavez Road.
- (12) Route 12: US 281 (Cage Boulevard) from US 281/Military Highway to Anaya Road.
- (13) US 281/Military Highway from Spur 29 to FM 1015.
- (14) Farm to Market 1015 - Progreso International Bridge to Mile 9 North.
- (15) US 83 Business - Farm to Market 1015 to South Bridge Avenue.

The gross weight of cargo and equipment shall not exceed the allowable permissible axle load, the Mexican Legal Weight Limit or 125,000 lbs, whichever is less, and the dimensions of the load and vehicle shall not exceed 12' wide, 15'6" high, or 110' long.

OVERWEIGHT / OVERSIZE CORRIDOR SEGMENTS



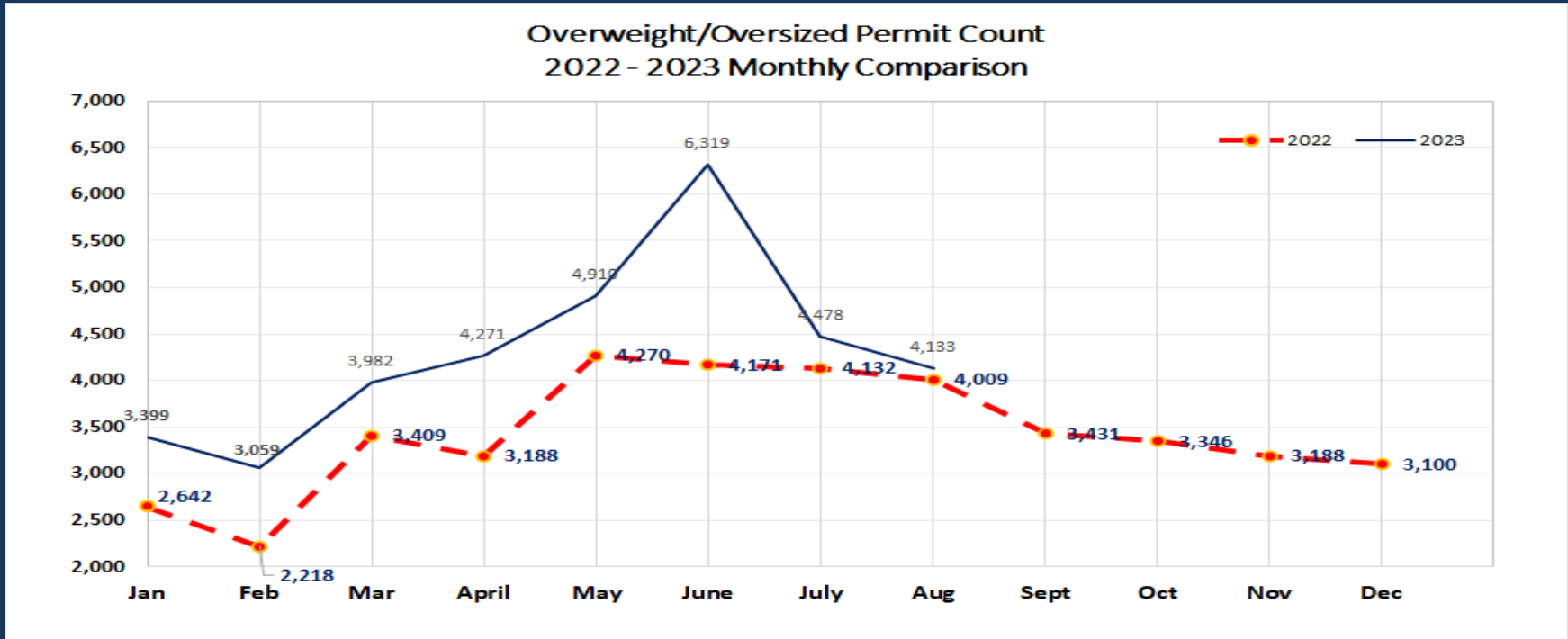
► **Overweight Report for September 2023:**
January 1, 2023 – August 31, 2023



Total Permits Issued:	34,551
Total Amount Collected:	\$7,054,458
■ Convenience Fees:	\$ 144,258
■ Total Permit Fees:	\$6,910,200
-Pro Miles:	\$ 103,653
-TxDOT:	\$5,873,670
-HCRMA	\$ 932,877

► Overweight Report for 2023: January 1, 2023 – August 31, 2023

OW



- Notes:
1. The permit count for 2022 (41,104) ended with a +4.5% (increase of 1831) compared to 2021 (39,273).
 2. Monthly permit count of 4,133 represents a +3% (increase, 124) compared to the same month in 2022 (4,009).

